

SUNSHINE & *light*

MODERN MEETS TRADITIONAL IN THIS INVITING BAYSIDE MELBOURNE HOME

STORY JACKIE BRYGEL STYLING WENDY BANNISTER
PHOTOGRAPHY SHANIA SHEGEDYN



ARTWORK (OPPOSITE) DEL KATHRYN BARTON

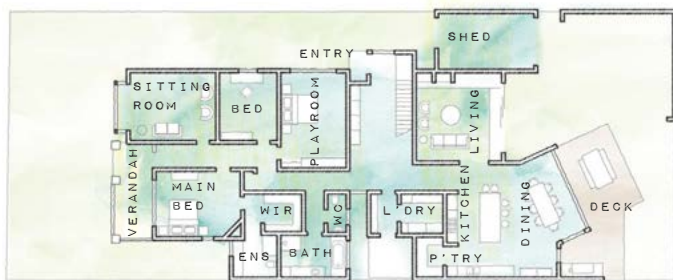


OPEN & SHUT The Melbourne home of Juliet, Nick and their two little boys is a study in difference, with secret nooks, such as the service area cunningly hidden behind a timber feature wall (opposite), contrasting with airy, open spaces, like the double-height kitchen and dining area (below). Presiding above the dining zone is an eye-catching Nemo 'Crown Major' pendant (available from Cult). "I love that this pendant isn't too pretty or fussy, yet it's still quite intricate," says Juliet (pictured opposite). "We can even hang things from it for a bit of fun." The 'Waka' dining table in American walnut from Tide Design, teamed with vintage Eames moulded chairs, brings a sense of classic style. >



FLOOR PLAN

GROUND FLOOR



FIRST FLOOR



Melbourne woke to a chilly blanket of heavy fog, but it's now mid-morning and, at last, the sun is out. So, too, are cute-as-a-button brothers Isaac, four, and Leo, two, in the leafy garden of Juliet and Nick's bayside home. For this little duo, there's endless fun to be had picking and eating homegrown greens from the family's thriving veggie patch, much to their parents' delight. "We've grown fantastic silverbeet here, as well as lots of herbs, cucumbers, beans and strawberries," says Juliet. "The children are very good eaters and they love pottering around collecting. Leo's always wandering back inside the house munching on basil leaves."

For Juliet and Nick, a strong connection to the outdoors was high on the wishlist when they decided to restore and extend their '30s Californian bungalow. The couple, who also share a long-held passion for art and design, envisaged a north-facing contemporary extension that would infuse the home with warmth and light. "The house had previously been renovated in the early '80s, but that extension and lean-to came with a leaky flat roof and no insulation," says Juliet. "It had to go. But we really loved the original part of the house and always knew we would restore that."

Enlisting the expertise of Fine Line Building Design and T & S Hoar Builders, as well as interior designer Fiona Austin of Austin Design Associates, the pair closely watched the project take shape – literally. "We were fortunate enough to be able to rent the house next door during the renovation, which was such a stroke of luck," says Juliet. "It meant we were able to check on the progress daily. The whole family got to know the builders and came to respect just how much work goes into every single stage of a renovation."

The consistent use of organic timber and natural stone in both the old and new wings brings a sense of unity to the newly revamped home. In the open-plan kitchen and dining zone, a double-height void drenches the room with sunlight, while a cosy living room – complete with a fireplace and comfy sofas – is the perfect spot to hunker down in the cooler months. Upstairs, a guest bedroom and separate living space, with tranquil treetop views, is a haven for visiting family and friends.

Yet, what truly makes this house come alive are the splashes of colour, the family's lively personality reflected in a delightfully varied collection of artwork, furnishings and sentimental treasures. "Our style is definitely eclectic," says Juliet. "We love to mix up old and new, as well as some things that are a bit more designer, with pieces that were Ebay or roadside finds. Everything that's here is because we love it – although sometimes there might be a few too many things we love! But what I like most about the house is that it feels like us." Which is exactly how a home should feel.

DINING AREA In an inviting corner of the dining zone (top left), a vintage black leather swivel chair from Danish Red beckons. The cute flower rug was a thrifty Spotlight discovery. **HALLWAY/ENTRY** A full-length Australian hardwood feature wall lends natural appeal to the hallway (opposite), while also concealing the entrance to the laundry. In this well-considered family home, there are storage solutions in every zone. Roomy drawers and shelves in bespoke powder-coated steel and timber veneer keep everyday clutter at bay. >

"I LIKE THAT THE ENTIRE HOUSE ISN'T *revealed* AT ONCE. THERE ARE HIDDEN DOORS, *corners* TO BE TURNED AND SPACES TO BE EXPLORED" ~ JULIET



COWHIDE
Get the look with a natural cowhide rug in Beige, from \$309, Zanui.

WE LOVE...
magnificent marble

A densely veined slab of 'Manhattan Grey' marble from Corsi & Nicolai adds an organic element to soften the kitchen's stark, architectural lines and monochrome palette. "This marble is perfect because it has so much colour and texture, so you don't have to be too precious with it," says Juliet, who opted for this glamorous material on the island and indestructible stainless-steel on the back work surfaces. Visit cнанaturalstone.com.





“ONE OF THE *great* THINGS ABOUT THE HOUSE IS THAT SPACES CAN BE *adapted* AS WE NEED” ~ JULIET



KITCHEN

The home’s expansive two-toned kitchen is a vision of stylish functionality (opposite & this page). Hardy stainless-steel work benches allow the family to cook up a storm without mucking up the marble island bench, while an Armando Vicario ‘Tink’ sink mixer in Black gives an element of sculptural beauty to the mundane task of washing up. The zone’s white handle-free joinery and a custom-made up/down pendant from Lights & Tracks set a crisply contemporary tone in the kitchen, but there’s no lack of contrasting texture and warmth. ‘Duke’ oak stools from Map Furniture and



Ventech veneer contribute a touch of timber (opposite & top), while leather handles from MadeMeasure are a quirky addition to the larger cabinets (top). Even the heating panels on the front of the island help to break up the expanse of joinery (opposite). The kitchen’s connection with the adjoining living spaces is among the home’s highlights (above left & right); “I love that you can see so much of the house from the kitchen and eating area,” says Juliet. One of the secrets to making this open layout work is the butler’s pantry (right), which can be closed to make mess invisible when company comes over.



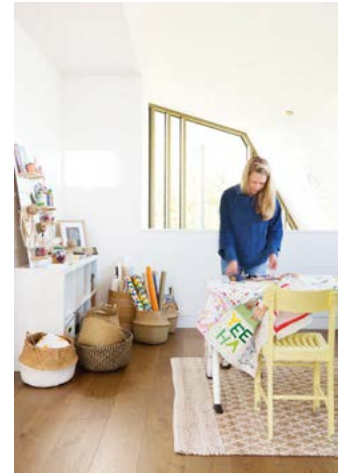
CABINETS
‘Legato’ 18mm board in Bone White, from \$220.44/2400mm x 1200mm, Polytec.



TILES
Glazed hexagonal tiles, \$98.23/sqm, Academy Tiles.



ENSUITE
Understated, yet undeniably luxe, the ensuite (left) features a soothing, organic palette of Laminex 'Tasmanian Oak Wave' timber veneer, used on the cabinetry, and the same 'Manhattan Grey' marble from Corsi & Nicolai that appears in the kitchen. White hexagonal mosaics, paired with a pale grey grout, line the splashback, while a delicate 'Eido' pendant from Porcelain Bear adds a lovely finishing touch.



LIVING ROOM
The custom-made tan leather window seat in the separate living room (above left) is Juliet's favourite sunny spot. "Open-plan living is great, but we wanted a space that we could close off with a sliding door to make it more intimate," she says. The bluestone hearth and floating timber display shelves make textural focal points, as does the 'Jasper' waffle throw from Bed Bath N' Table draped over the ottoman.

"A GOOD INTERIOR *designer* HELPS YOU LOCATE EXACTLY WHAT YOU WANT AND NARROW DOWN THE *choices*. FIONA WAS A HUGE HELP" ~ JULIET



PLAYROOM
Functionality meets funky style in the playroom (above right). A black-and-white polypropylene rug from Ikea packs a graphic punch, while the practical storage - 'Fjälkinge' units, also from Ikea - ensures toys can be neatly packed away at the end of the day. "This playroom is definitely Isaac and Leo's favourite part of the house, although Isaac also loves the floorboards in the hallway for zooming cars up and down!" says Juliet.



MAIN BEDROOM
The iron bed - 'Scout' in Golden Yellow from Scout House - in the couple's retreat (right) may be Juliet's all-time favourite piece. "I bought it early in the relationship and when Nick said, 'No worries', I thought, 'Yes, this is the guy for me!'" she says. Always on the lookout for fabulous finds, Juliet spotted the dresser at an antiques auction house, while the round floor rug was a budget-savvy Spotlight purchase.



ARTWORK (THIS PAGE, BOTTOM LEFT) DEL KATHRYN BARTON

UPSTAIRS LOUNGE

“This will probably be a homework area for the boys when they’re a bit older, but at the moment it’s my creative spot,” says Juliet (pictured opposite, top right), who has commandeered a corner of this space as her sewing station. With the guest bedroom positioned next door, the rest of this room is designed for visitors to enjoy some downtime. Juliet has prettied up the space with a colourful Spotlight rug and vintage couches (below), and a second-hand cabinet (opposite bottom left) painted in her favourite cheery hue. >



GARDEN

The home flows seamlessly from kitchen to dining room to deck and garden, giving Juliet and Nick the outdoor connection they wanted, and allowing Isaac and Leo easy access to explore nature.

CONTACTS

Interior design

Austin Design Associates,
(03) 9592 6411,
austindesign.com.au.

Architect

Fine Line Building Design,
(03) 9591 0144, fineline.net.au.



ECLECTIC COLOUR



1



2



3



4

INSIDE STORY JULIET & NICK'S HOME

Who lives here?

Juliet (pictured), a lawyer; Nick, a CEO; sons Isaac, four, and Leo, two (both pictured); and Dustin Martin, the goldfish.

Why is this a lovely home year-round?

Juliet: "It's very cosy, but it's also great in summer, with lots of cooler spots, especially in the original part of the house. It seems to work well for all the seasons. It's reasonably open, but with the capacity to close off spaces when needed."

What's your biggest decorating weakness?

"All textiles, especially bedlinen and vintage woollen blankets. They can be a cost-effective and impact-effective way of changing a room."

What's left on the wishlist?

"The front garden definitely still needs some work, as we'd love to start spending time out there - not just in the back garden."



5



6



7

1. 'Rustic' timber veneer in Black Gold, Ventech.
2. Ironbark sleepers, try Alpine Timber.
3. Bedlinen, try 'Gridlock Pastel' quilt cover, Kip & Co.
4. Custom-painted cabinet, try Dulux Duramax spray paint in Dandelion Yellow.
5. Joinery in 'Tasmanian Oak Wave' timber veneer, Laminex.
6. Artwork by Del Kathryn Barton.
7. Interior hardwood feature wall, try Tasmanian oak battens, Bunnings Warehouse.